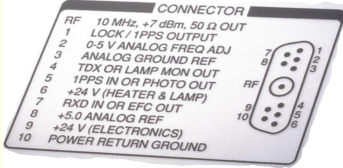
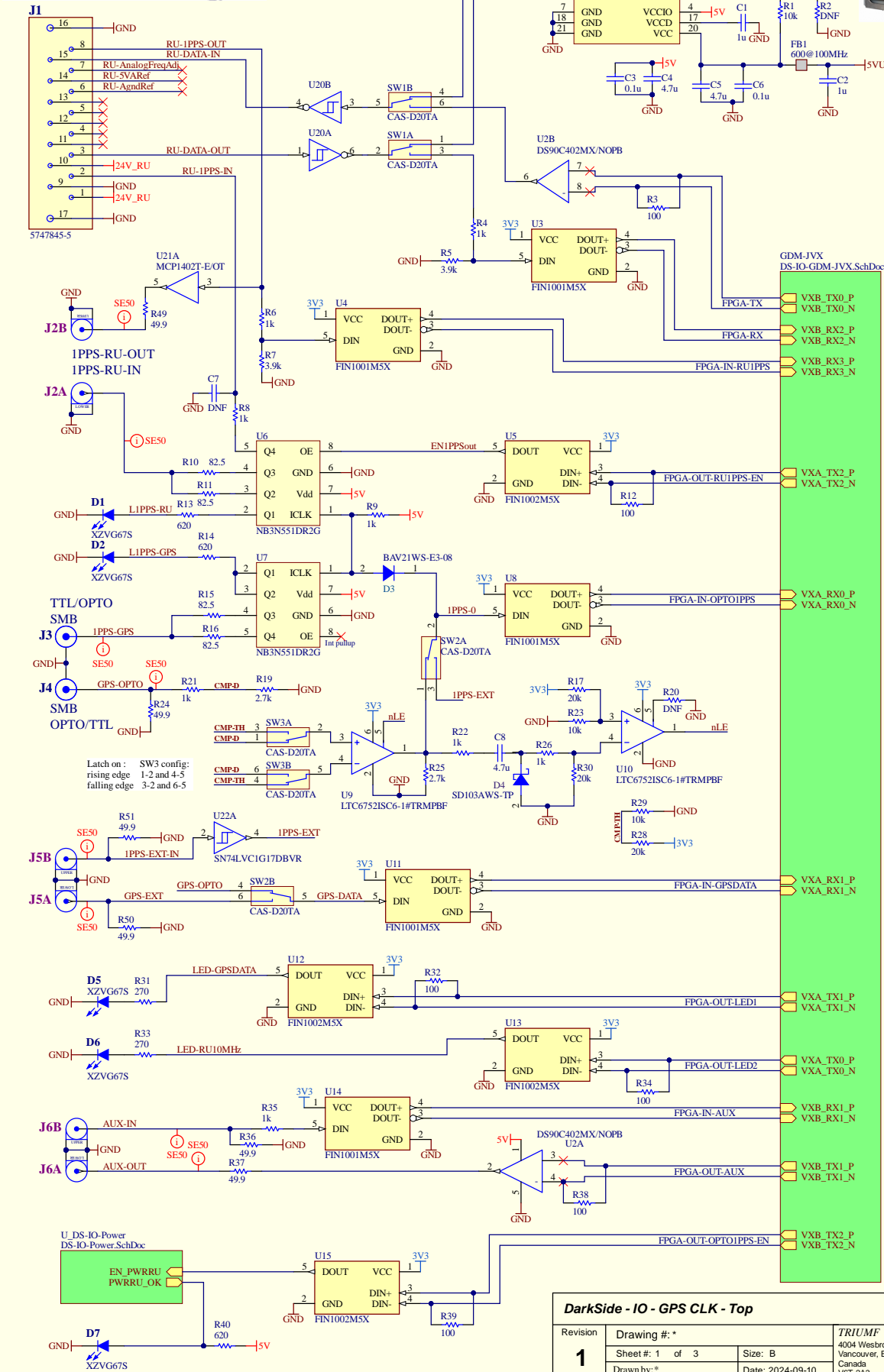


Logic outputs (LOCK/1PPS and TXD/PHOTO) have a 1 k Ω output resistance driven by a CMOS logic device operating between +5 V_{cc} and ground. Logic inputs (RXD/EFC and 1PPS_IN) have 100 k Ω to ground and 3.9 k Ω CMOS gate inputs (which have input protection diodes to +5 V and ground).



CONNECTOR MATES WITH:
 1. POSITRONIC CBM11W1F2 WITH COAX INSERT MS4104D
 2. CANCON D4811W1F5 WITH COAX INSERT DM53740-5000

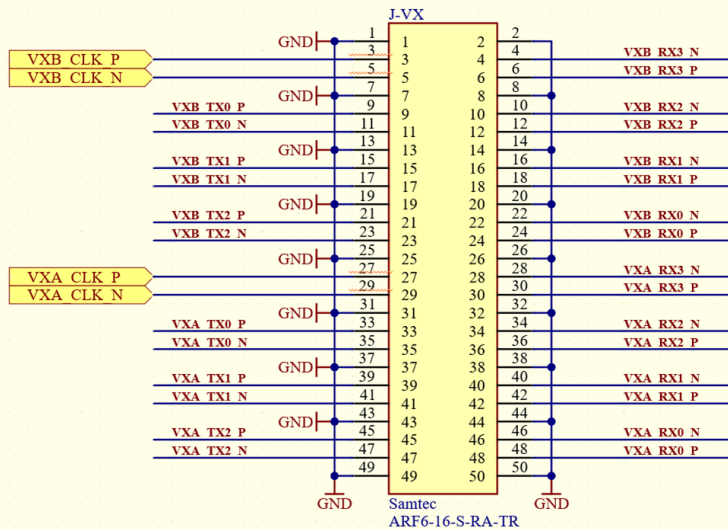


DarkSide-IO-GPS CLK-Top

Revision	Drawing #: *	TRIUMF	
1	Sheet #: 1 of 3	4004 Westbrook Mall Vancouver, B.C. Canada V6T 2A3	
Drawn by: *	Date: 2024-09-10	2:17:25 AM	

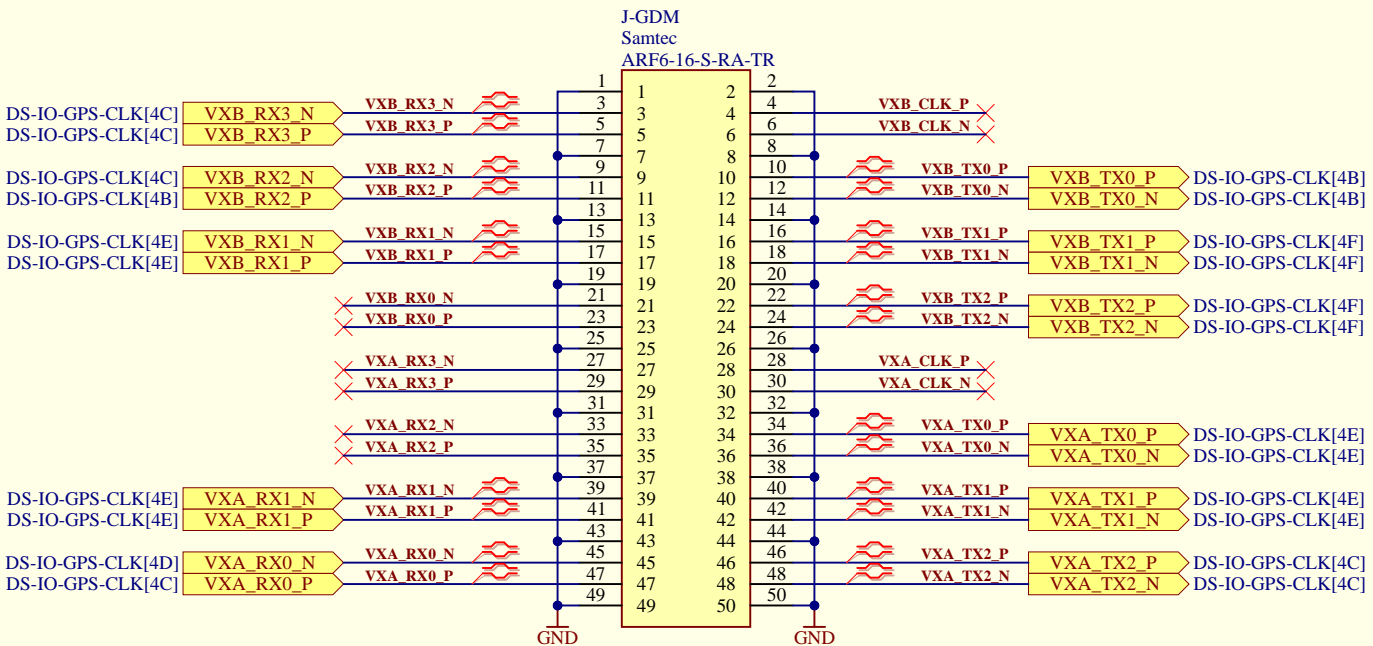
File: E:\dev-IRWDS-IO-GPS-REV11\dev11\Analog\DS-IO-GPS-CLK_SchDoc

This is ARF connector and nets on DS-GDM



Use this off shelf Samtec cable to connect DS-GDM with DS-IOGC

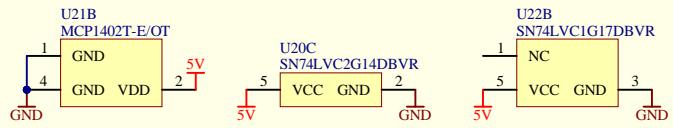
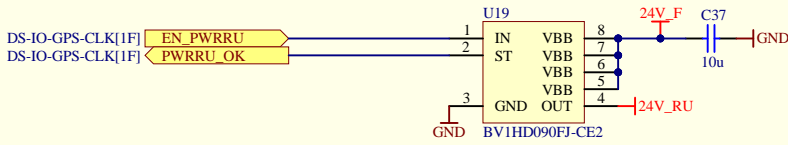
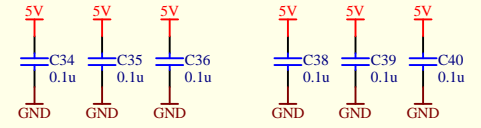
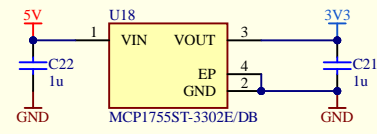
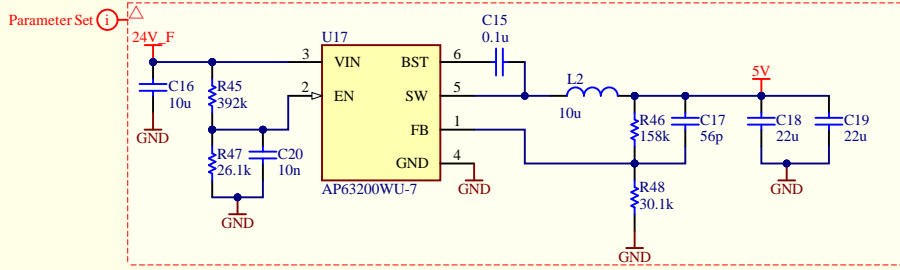
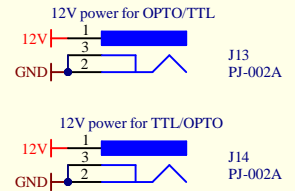
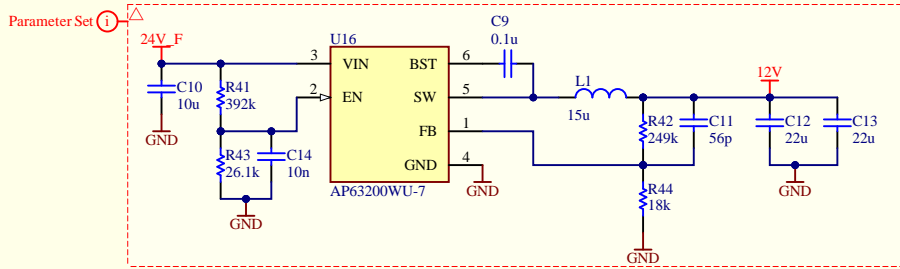
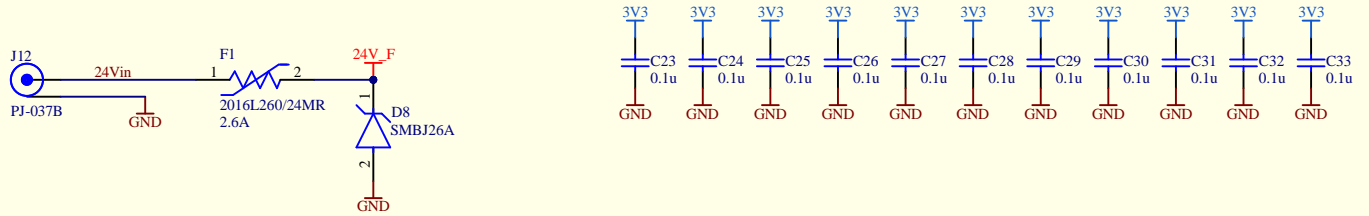
WIRING OPTION		ARC6-16-XX.X-XX-XX-XX-X SIGNAL MAPPING																								
		POSITIONS																								
-2 (PIN1 TO PIN 2)	J1	1	3	5	7	9	11	13	15	17	19	21	23	25	27	29	31	33	35	37	39	41	43	45	47	49
	NAME	GND1	PAIR	GND1	PAIR	GND1	PAIR	GND1	PAIR	GND1	PAIR	GND1	PAIR	GND1	PAIR	GND1	PAIR	GND1	PAIR	GND1	PAIR	GND1	PAIR	GND1	PAIR	GND1
	J2	2	4	6	8	10	12	14	16	18	20	22	24	26	28	30	32	34	36	38	40	42	44	46	48	50
	NAME	GND2	PAIR	GND2	PAIR	GND2	PAIR	GND2	PAIR	GND2	PAIR	GND2	PAIR	GND2	PAIR	GND2	PAIR	GND2	PAIR	GND2	PAIR	GND2	PAIR	GND2	PAIR	GND2



Net Names are taken from GDM
TX and CLK are outputs from GDM
RX are inputs to GDM

DarkSide - IO - GDM - JVX connector

Revision 1	Drawing #: *		TRIUMF 4004 Wesbrook Mall Vancouver, B.C. Canada V6T 2A3	
	Sheet #: 2 of 3	Size: A		
	Drawn by: *	Date: 2024-09-10		
File: C:\Edev-HW\DS-IOGC-REV1\rev1\Altium\DS-IO-GDM-JVX.SchDoc				
2:17:25 AM				



DarkSide - IO - Power

Revision	Drawing #: *	TRIUMF	
1	Sheet #: 3 of 3	4004 Wesbrook Mall	
Drawn by: *	Date: 2024-09-10	Vancouver, B.C.	
		Canada	
		V6T 2A3	

File: C:\Edev\HWDS-IOGC-REV1rev1\Altium\DS-IO-Power.SchDoc 2:17:25 AM