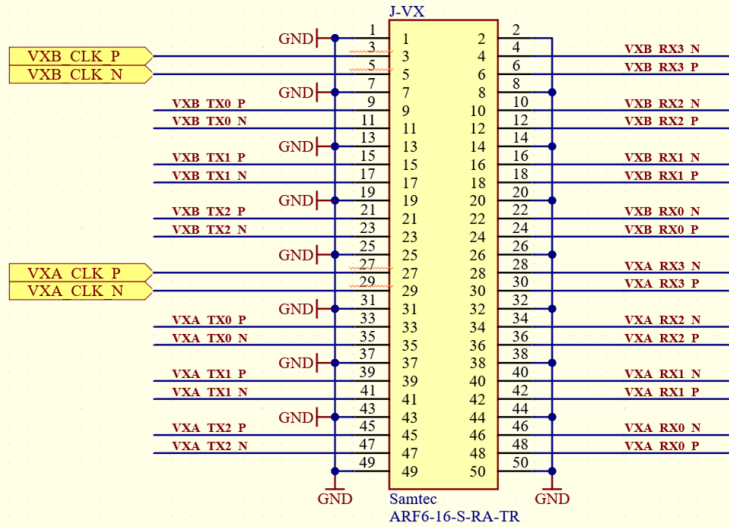


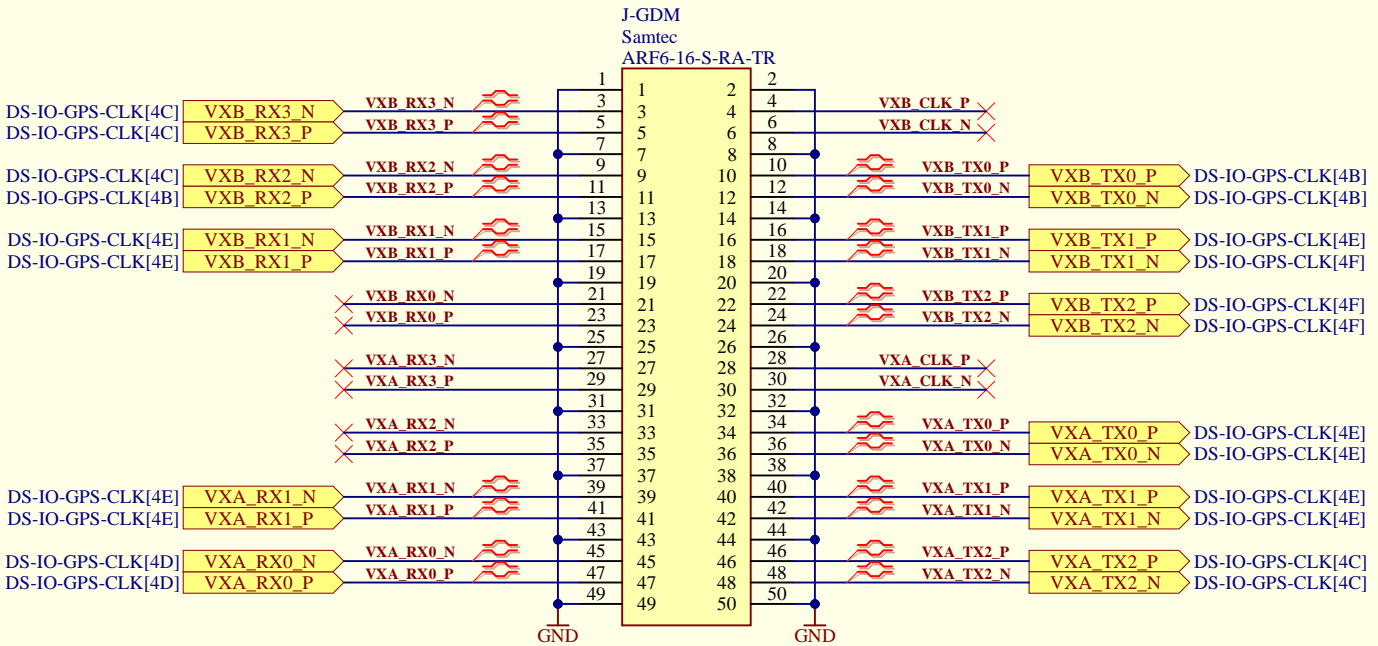


This is ARF connector and nets on DS-GDM



Use this off shelf Samtec cable to connect DS-GDM with DS-IOGC

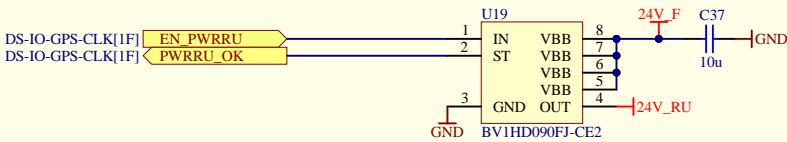
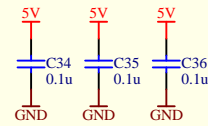
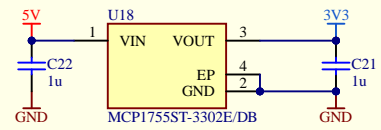
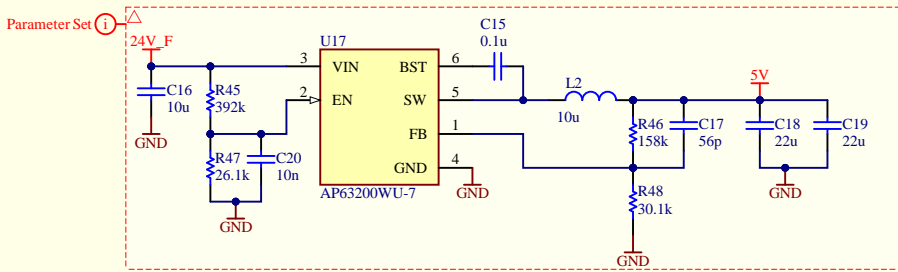
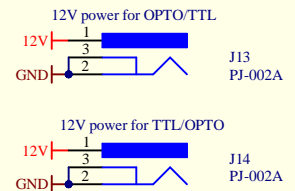
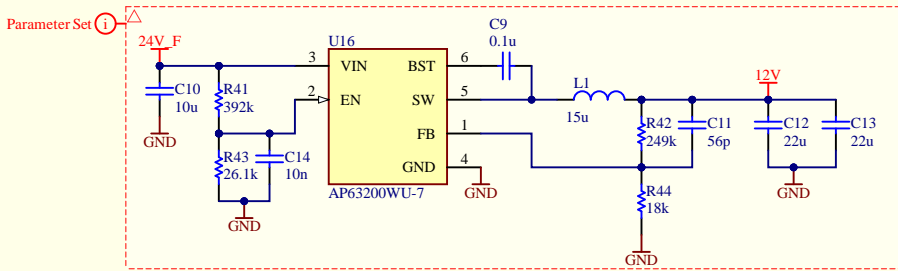
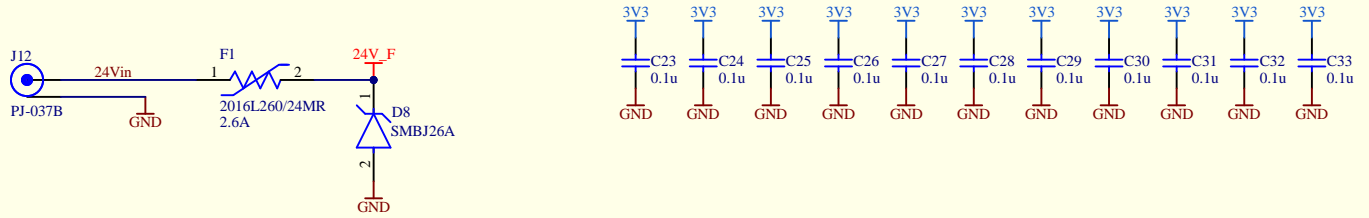
WIRING OPTION		ARC6-16-XX-X-XX-XX-XX-X SIGNAL MAPPING																								
		POSITIONS																								
-2 (PIN1 TO PIN 2)	J1	1	3	5	7	9	11	13	15	17	19	21	23	25	27	29	31	33	35	37	39	41	43	45	47	49
	NAME	GND1	PAIR	GND1	PAIR	GND1	PAIR	GND1	PAIR	GND1	PAIR	GND1	PAIR	GND1	PAIR	GND1	PAIR	GND1	PAIR	GND1	PAIR	GND1	PAIR	GND1	PAIR	GND1
	J2	2	4	6	8	10	12	14	16	18	20	22	24	26	28	30	32	34	36	38	40	42	44	46	48	50
	NAME	GND2	PAIR	GND2	PAIR	GND2	PAIR	GND2	PAIR	GND2	PAIR	GND2	PAIR	GND2	PAIR	GND2	PAIR	GND2	PAIR	GND2	PAIR	GND2	PAIR	GND2	PAIR	GND2



Net Names are taken from GDM  
TX and CLK are outputs from GDM  
RX are inputs to GDM

**DarkSide - IO - GDM - JVX connector**

Revision <b>0</b>	Drawing #: *		TRUMF 4004 Wesbrook Mall Vancouver, B.C. Canada V6T 2A3	
	Sheet #: 2 of 3	Size: A		
	Drawn by: *	Date: 2024-07-05		



DarkSide - IO - Power			
Revision	Drawing #: *	TRIUMF	
0	Sheet #: 3 of 3	Size: A	4004 Wesbrook Mall
	Drawn by: *	Date: 2024-07-05	Vancouver, B.C.
			Canada
File: C:\Work\Dark Side IOGC\rev0\Allium\DS-IO-Power.SchDoc			V6T 2A3
			09:54:56 AM